

# SELI NEWS

Summer English Language Institute • College Writing Programs

Summer Sessions, University of California, Berkeley

Issue #2, July 21, 2008

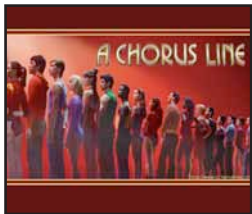
Welcome to UC Berkeley and to the Summer English Language Institute (SELI). The instructors and staff are delighted that you could join us in Berkeley this summer. This newsletter provides information that you need to know for your stay with us. Throughout the summer, we have many events planned for outside the classroom. And, we'll let you know about events around campus, around town and around the Bay Area.

## UPCOMING EVENTS



**JULY 22, 2008**  
**San Francisco Giants vs. Washington Nationals**

Visit AT&T park in San Francisco to see America's favorite pastime, baseball! Be with us to cheer in the stands to root for our hometown team, The Giants, against the Nationals of Washington, D.C. See details on page 2.



**JULY 23, 2008**  
**A Chorus Line**  
Tickets are sold out. If you have already paid for a ticket, see page 2 for details.

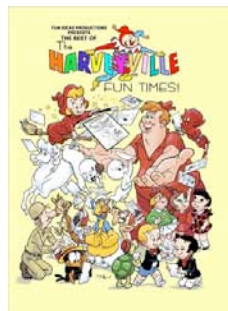
**JULY 24, 2008**  
**Escorted Dinner to Everett and Jones Barbeque**

Everett and Jones has been a Bay Area tradition for over 30 years. Whether it's pork ribs, beef brisket, links or chicken, its slow roasted, hickory smoked meats literally fall off the bone. Bring an appetite! Just beware, their 'hot' sauce will burn a hole in your cheeks. Go with the medium or mild instead.



**JULY 25, 2008**  
**BERKELEY ART MUSEUM**  
Take a tour of Berkeley Art Museum, for an "Information Hunt". The University of California, Berkeley Art Museum and Pacific Film

Archive (BAM/PFA) is the visual arts center of the University of California, Berkeley and one of the largest university art museums in the United States. See details on page 2.



**JULY 25, 2008**  
**CARTOON ART MUSEUM**  
Visit the Cartoon Art museum in San Francisco. The Cartoon Art Museum is the only museum in the western U.S.A. dedicated to the preservation and exhibition of cartoon art in all its forms. More details on Page 2.

**JULY 26, 2008**  
**Berkeley Kite Festival**



At the Berkeley Kite Festival it seems that a fresh surprise awaits around every corner. In one amphitheater you'll find multi-line competitions of the Bay Area Sport Kite League. In another you'll find events and other competitions, such as the candy drops and rokaku battles. Look to the north and you will see the traditional kites of our special guests from the Sode-cho Kite-Flying Society of Hamamatsu, Japan. In the upper field you'll enjoy the giant creature kite show of the Berkeley Kite Wranglers. You can even join in on kite-making lessons and fly your new creation.



**JULY 27, 2008**  
**Glide Memorial Church**

Come hear gospel music at San Francisco's famous Memorial Church. Gospel music is a large body of American religious song with texts that reflect aspects of the personal religious experience of Protestant evangelical groups, both white and African American. See details on page 2.



**AUGUST 1, 2008**  
**Sonoma Wine Tasting and tour**

With more than 200,000 acres stretching from the rugged Pacific coast to the Mayacamas Mountains, Sonoma County offers a rich and varied landscape steeped in history. Visit Benziger, Ravenswood and Valley of the Moon wineries for a tour of vineyards, wine tasting, and experience the beauty of Sonoma. See details on page 2.

**AUGUST 8, 2008**  
**Gold Rush Walking Tour of San Francisco**

Did you know that San Francisco became an instant city during the California Gold Rush? Learn about SF's unique history, including the Vigilance Committee, the fleet of abandoned ships, and Emperor Norton. Follow the footsteps of the original 49ers on this guided walking tour. See details in next week's newsletter.

**SELI Office**

116 and 117 Wheeler Hall  
UC Berkeley Campus  
510.642.5975

Office Hours: Monday-Thursday,  
8:30 a.m. - 5:00 p.m.

## EVENT DETAILS

### San Francisco Giants vs. Washington Nationals

**Date:** Tuesday, July 22, 2008

**Time:** 7:15 p.m.

**Place:** AT&T Park, San Francisco

**Cost:** Tickets: \$11 cash in advance

**BART:** \$6.80 (round-trip)

**Food:** You decide.

**Sign up:** Sign up is required! Tickets are sold first come, first served and may sell out. Please sign up and purchase your tickets in the SELI office, at the table in the lobby outside of 112 Wheeler. Tickets may be purchased on Monday, July 21 - Tuesday, July 22 between 12-2 p.m. and 4:30-5 p.m. ONLY. Exact change is required.

**Where to Meet:** We will take BART to get to the baseball park. A group of students and instructors will meet at **5:45 p.m.** at the Downtown Berkeley BART on the day of the game. The game starts 7:15 p.m. but everyone should be in their seats by 7:00 p.m. to see all the things that go on before the game, including the national anthem and the first pitch.

**Weather:** AT&T Park can get very cold at night, so even if the afternoon is warm, be sure to bring a warm sweatshirt or jacket. Dress in layers.

**Team Colors:** The San Francisco Giants' colors are orange, black, and white. It can be fun to dress in the colors of the team that you favor, but it is certainly not required.

### A Chorus Line

**Date:** Wednesday, July 23th, 2008

**Show Start Time:** 8:00 p.m.

**Meeting Place:** We will meet at the Downtown Berkeley BART at the bottom of the escalator at **6:45 p.m.** We'll take BART to the Powell Street Station, and walk from there. For those who want to go on their own, the theater is at 445 Geary Street near Mason Street in San Francisco.  
**Contact:** Davon Frasca (dshappen@AOL.com)

### Escorted Dinner to Everett and Jones Barbeque

**Date:** Thursday, July 24th, 2008

**Time:** 6:30 pm – 9:30 pm

**Place:** Everett and Jones Barbeque in Jack London Square.

**Cost:** Meals run from \$8.50 for a sandwich to \$14 for a dinner to \$25 for a four-meat feast feeding 2-3 people.

**Sign up:** Sign up is required. Please sign up in the SELI office at the table in the lobby outside of 112 Wheeler. Sign up is from Monday, July 21st through Thursday, July 24th between 12:00 – 2:00 p.m. and 4:30 – 5:00 p.m.

**Where to Meet:** We'll meet on the front steps of Wheeler Hall at **6:30 pm.** From there, we'll catch A/C Transit bus #51 to Jack London Square. Bring your UCB student ID to ride for free.

**How to get home:** After dinner, we'll take a little tour of Jack London Square and ride the bus back to campus at approximately 9:00 pm.

**Contact:**

Matthew Barclay (walrus77@comcast.net)

### Berkeley Art Museum

**Date:** Friday, July 25, 2008

**Time:** 11:00 a.m.

**Cost:** Free with UCB Student ID, \$5 without card.

**Where:** Meet the instructor, Amy Prentiss, at **11:00 a.m.** at Bancroft Avenue entrance, 2626 Bancroft Way. (between College Ave & Bowditch Street.)

**Sign up:** Sign up is required! Please sign up and in the SELI office, at the table in the lobby outside of 112 Wheeler. Sign up on Monday-Thursday, July 21-24, between 12-2 p.m. and 4:30-5 p.m. ONLY.

**Contact:**

Amy Prentiss (AmyPrentiss@comcast.net)

### Cartoon Art Museum

**Date:** Friday, July 25, 2008

**Time:** 10:15 a.m.

**Cost:** \$2 with UCB Student ID, \$4 without card.

**Where:** Meet the instructor, Michele Rajotte, at Meet at the bottom of the escalator at the Downtown Berkeley BART station at **10:15 a.m.**

**Sign up:** Sign up is required! Please sign up and in the SELI office, at the table in the lobby outside of 112 Wheeler. Sign up on Monday-Thursday, July 21-24, between 12:00-2 p.m and 4:30-5 p.m. ONLY.

**Contact:** Michele Rajotte (mrajotte@post.com)

### Berkeley Kite Festival

**Date:** Saturday, July 26, 2008

**Time:** 12:00 p.m. - 4:00 p.m.

**Place:** Cesar Chavez Park at the Berkeley Marina

**Cost:** Free

**Sign up:** Sign up is required! Please sign up and in the SELI office, at the table in the lobby outside of 112 Wheeler. Sign up on Monday-Thursday, July 21-24, between 12-2 p.m. and 4:30-5 p.m. ONLY.

**Where:** We'll meet at Berkeley BART (the main entrance at the corner of Center St. and Shattuck Ave). at **12:00 p.m.** From there, we'll take A/C Transit bus #9 to the Berkeley Marina. Bring your UCB student ID to ride for free.

**How to Get Home:** You'll get back to campus on your own. Stay as long as you like, but the last #9 bus leaves the Berkeley Marina at 8:00 p.m.

**Contact:**

Matthew Barclay (walrus77@comcast.net)

### Glide Memorial Church

**Date:** Sunday, July 27, 2008

**Time:** 9:30 a.m.

(at downtown Berkeley BART station)

**Cost:** Free Admission to church. Donation is optional.

**Where:** 330 Ellis Street, San Francisco

**Sign up:** Sign up is required! Please sign up at SELI office, at the table in the lobby outside of 112 Wheeler Monday, July 14 through Thursday, July 17 between 12-2 p.m. and 4:30-5 p.m., and Monday, July 21-Thursday, July 24 between 12-2 p.m. and 4:30-5 p.m. ONLY.

**Where to Meet:** Meet at the bottom of the escalator at the Downtown Berkeley BART station at **9:30 a.m.** Or, if you're in San Francisco, you can meet us in front of the Gap store at Powell and Market streets at 10:15 a.m.

**How to get home:** You'll get back to Berkeley on your own. There are no direct BART trains to Berkeley. You will have to take a Pittsburg/Bay-Point train and transfer to a Richmond train at 12th Street in Oakland.

**Contact:** Linda O'Roke (linda\_orokey@yahoo.com)

**More Information:**

<http://www.glide.org/celebrate>

### Sonoma Wine Country Tour & Tasting

**Date:** Friday, August 1, 2008

**Time:** 8:15 A.M.- 5:00 P.M.

**Place:** Benziger, Ravenswood & Valley Of The Moon Wineries

**Cost:** \$50

**Sign up:** Sign up is required! You MUST be 21 in order to take this trip. Bring a passport or driver's license to the SELI office, at the table in the lobby outside of 112 Wheeler Hall. Tickets may be purchased Monday, July 21, through Thursday, July 24, from 12-2 p.m. and 4:30-5pm, and Monday, July 28- Thursday, July 31 from 12-2 p.m. and 4:30-5 p.m. only. Exact Change is required. No tickets will be sold to you if you forget your I.D. Cash Only. There are a limited number of tickets.

**Where to Meet:** We will take a charter bus. A group of students and teachers will meet at the bus at the intersection of Telegraph Avenue and Bancroft Way. You must be there at **8:15 a.m.**

**Weather:** It gets very hot walking through the vineyards, so wear light clothes, and bring plenty of water.

**Lunch:** Please bring your own lunch, or be prepared to buy lunch at a deli.